



Base Engine - Cursor 8,7 Electronic Gdrive

Customer Management

June 2017

LATAM – Customer Management

Base Engine Project

Engine pivot reference

- F1 Family (n.2)
 - F1A
 - F1C
- NEF Family (n.6)
 - NEF 45 Electronic On Road
 - NEF 67 Electronic On Road
 - NEF 45 Mechanical Off Road
 - NEF 67 Mechanical Off Road
 - NEF 45 Electronic Off Road
 - NEF 67 Electronic Off Road
- Cursor Family (n.6)
 - CURSOR 9 On Road
 - CURSOR 10 On Road
 - CURSOR 13 On Road
 - CURSOR 9 Off Road CURSOR 10 Off Road
 - CURSOR 13 Off Road
- S8000 Family (n.2)
 - S8000 3 Cyl. Off Road
 - S8000 4 Cyl. Off Road
- G - Drive Family (n.6)
 - S8000 G - Drive
 - NEF 4 G - Drive
 - NEF 6 MEC. G - Drive
 - NEF 6 ELE. G - Drive
 - CURSOR 9 G - Drive**
 - CURSOR 13 G - Drive



Cursor 87 Electronic Gdrive - 5802227293

INDEX

Base Engine Matrix

Variant Engine Matrix

Base Engine Max. Dimensions/Views

General Engine Portfolio Variants

Main Features & Competitive Advantages

FPTi Engines Portfolio – Cursor 9 Electronic Industrial Application - 5802227293

Base Engine Matrix

Block 1 – Engine Type

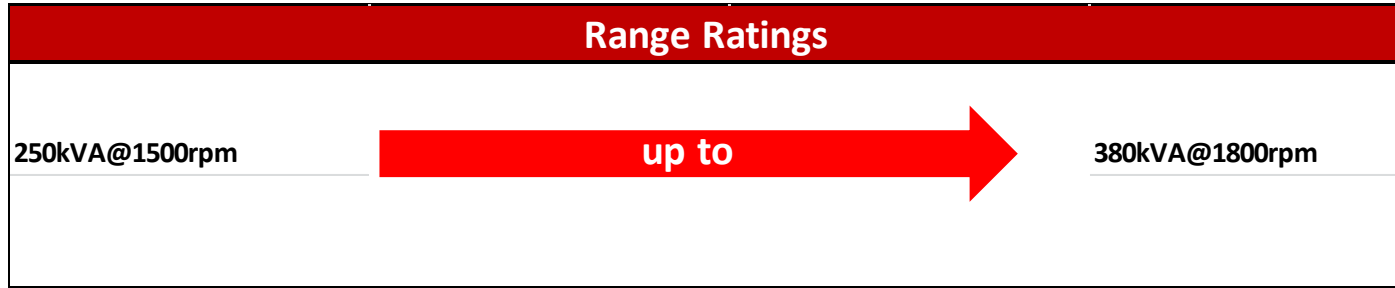
Engine Family	Cursor
Number Cylinder	6
Displacement L	7.8
Emission	Non Emissioned
Mission (Off-Road or On-Road)	Industrial
Current Vehicle Application	Gdrive
Segment Application	Industrial
Footprint	Sete Lagoas

Block 2 – Engine Base

Power (kVA@rpm)	380@1800
Injection Type@Brand	Common Rail
Engine Speed(rpm)	1800
Voltage (V)	24
Crankcase	Steel
Overhead Cylinder	Iron Cast 4 Valves
Dry weight (Including cooling package)	1050
Driven Type	Gear
EGR System (Yes or No@Type)	NA

Block 3 – Dressing

Turbocharger	WG
Flywheel to Clutch Assembly (Inch)	14
Flywheel Housing (SAE)	SAE 1
Oil Sump	Yes
Starter Mounting	Yes
Alternator (Brand@Am)	90
HWT and LOP sensors	Yes
WT and OP Transmitters for instruments	Yes
Front Mounted engine support	Yes
Front Mounted radiator support	Yes
Airheat Exchanger	Yes
Mounted Radiator	Yes
Fuel Filter	Yes
Oil Drain plug	Yes
Fan Protection	Yes
Fan air mounted with a belt tensioner	Yes
Starter	Yes



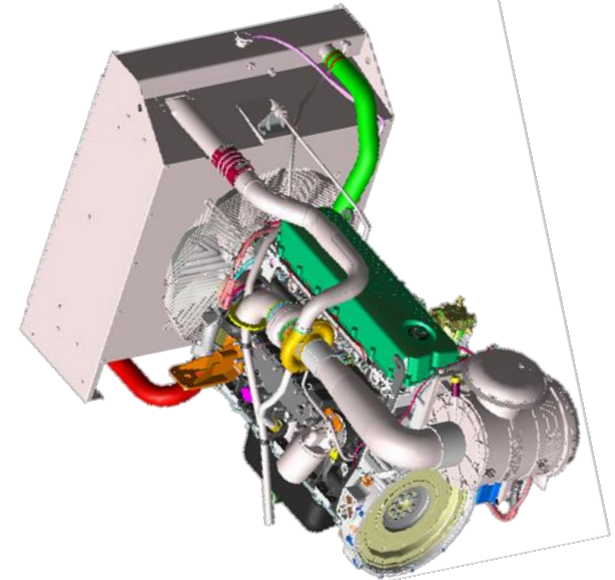
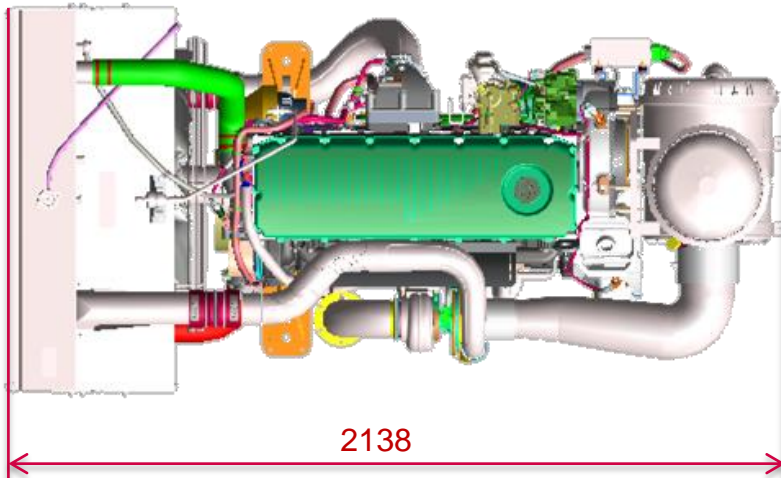
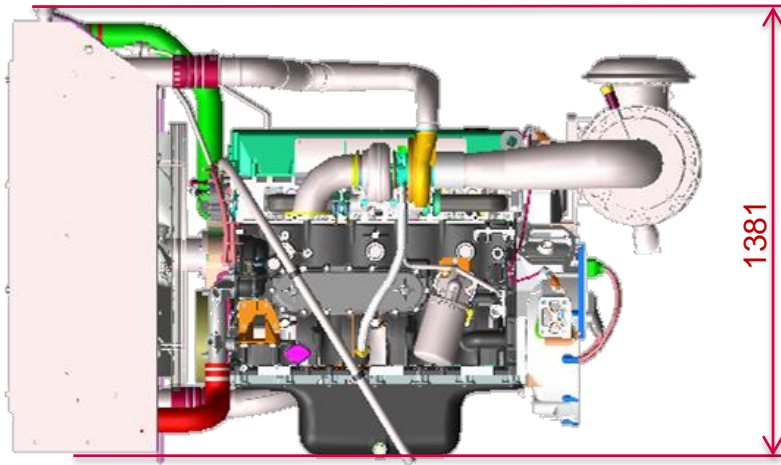
CNH Currents Application
Power Generation

Turbocharges Available
WG CTT

Engine Dress-Up (Optional)
Oil extraction pump
Oil extractwith resorvoir
Resistance to water preheating 120Vca or 230Vca
Protection to the exhaust monifold and turbine
Flexible exhaust pipe
Eletric System to 24 Vdc

FPTi Engines Portfolio – Cursor 9 Electronic Industrial Application - 5802227293

Base Engine Max. Dimensions/Views



FPTi Engines Portfolio – Cursor 9 Electronic Industrial Application - 5802227293

General Engine Portfolio Variants

FPTi Engines Potfolio				
Description	Characteristics	Variant 1	Variant 2	Variant 3
GENERAL ENGINE CHARACTERISTICS				
Engine Family	Cursor	Cursor	Cursor	Cursor
Number Cylinder	6	6	6	6
Displacement L	7.8	7.8	7.8	7.8
Emission	Non Emissioned	Non Emissioned	Non Emissioned	Non Emissioned
Mission (Off-Road or On-Road)	Industrial	Industrial	Industrial	Industrial
Current Vehicle Application	Gdrive	Gdrive	Gdrive	Gdrive
Segment Application	Industrial	Industrial	Industrial	Industrial
Footprint	Sete Lagoas	Sete Lagoas	Sete Lagoas	Sete Lagoas
ENGINE BASE CONFIGURATION				
Power (kVA@rpm)	380@1800	230@1500	240@1500	250@1800
Injection Type@Brand	Common Rail	Common Rail	Common Rail	Common Rail
Engine Speed(rpm)	1800	1800	1800	1800
Voltage (V)	24	24	24	24
Crankcase	Steel	Steel	Steel	Steel
Overhead Cylinder	Iron Cast 4 Valves	Iron Cast 4 Valves	Iron Cast 4 Valves	Iron Cast 4 Valves
Dry weight (Including cooling package)	1050	1050	1050	1050
Driven Type	Gear	Gear	Gear	Gear
EGR System (Yes or No@Type)	NA	NA	NA	NA
ENGINE DRESS UP				
Turbocharger	WG	WG	WG	WG
Flywheel to Clutch Assembly (Inch)	14	14	14	14
Flywheel Housing (SAE)	SAE 1	SAE 1	SAE 2	SAE 3
Oil Sump	Yes	Yes	Yes	Yes
Starter Mounting	Yes	Yes	Yes	Yes
Alternator (Brand@Am)	90	90	90	90
HWT and LOP sensors	Yes	Yes	Yes	Yes
WT and OP Transmitters for instruments	Yes	Yes	Yes	Yes
Front Mounted engine support	Yes	Yes	Yes	Yes
Front Mounted radiator support	Yes	Yes	Yes	Yes
Airheat Exchanger	Yes	Yes	Yes	Yes
Mounted Radiator	Yes	Yes	Yes	Yes
Fuel Filter	Yes	Yes	Yes	Yes
Oil Drain plug	Yes	Yes	Yes	Yes
Fan Protection	Yes	Yes	Yes	Yes
Fan air mounted with a belt tensioner	Yes	Yes	Yes	Yes
Starter	Yes	Yes	Yes	Yes
ENGINE PART NUMBER	5802227293	504357584	5801382421	504357582

FPTi Engines Portfolio – Cursor 9 Electronic Gdrive Industrial Application

Main Features & Competitive Advantages

MAIN FEATURES

- ❑ In-line 6-cylinders
- ❑ Cast iron cylinder block
- ❑ Cast iron cylinder head
- ❑ 4 valve, gear driven OHV
- ❑ Multiple injections over the whole engine map
- ❑ engine control unit
- ❑ Turbocharger Wastegate
- ❑ Fuel consumption optimized

COMPETITIVE ADVANTAGES

- ❑ Intake manifold integrated with cylinder head
- ❑ Electrical **interface box** to switch 1.500/1.800 rpm
- ❑ Standard G3 class (ISO 8528-5)
- ❑ temperature cold-start without auxiliary up to -10 °C
- ❑ Engine documentation
- ❑ Production custom-made
- ❑ Interface standard SAE 1 generator
- ❑ small engines
- ❑ complete range of power
- ❑ Compatibility with standard and alternative fuels in accordance with the regulations (B8).
- ❑ power up to 40 °C and 1000m a.s.l. before derating;